



11. VOLVO RETAIL SUSTAINABLE EXPERIENCE (VRSE)



VRSE

DELIVERING THE VOLVO RETAIL SUSTAINABLE EXPERIENCE (VRSE)

- 11.1 Introducing VRSE
- 11.2 VRSE Hero Site
- 11.3 VRSE Principles
- 11.4 Renewable Energy
- 11.5 Wooden Load Bearing Structure
- 11.6 Sawtooth roof
- 11.7 VRSE Canopy Roof
- 11.8 Biodiversity & Greenery
- 11.9 Storm Water Handling
- 11.10 Water Saving & Re-Use
- 11.11 Efficient Ventilation
- 11.12 Lighting
- 11.13 Insulated Shell
- 11.14 Environmental Certification
- 11.15 VRSE Clean Water & Coffee Station
- 11.16 VRSE Your Car Studio
- 11.17 VRSE Accessories Hub
- 11.18 VRSE Lifestyle Shop
- 11.19 VRSE Backdrop
- 11.20 VRSE Kid's Lounge
- 11.21 VRSE Sculpture
- 11.22 Surfaces
- 11.23 VRSE Furniture
- 11.24 Bespoke Furniture
- 11.25 VRSE Evaluation form

11.1.

INTRODUCING VRSE 1. A NEW DAWN



For years, Volvo has worked to improve the sustainability and climate-friendliness of both cars and retail environments.

With sustainability and global warming being increasingly important questions for people globally, it makes it even more relevant to take larger and more ambitious steps towards a greener future. VRSE is about holding the current line, bringing it into the long perspective, and provides a careful revision of the previous VRE concepts, to prepare for future challenges.

There are many different angles of sustainability to take into consideration.

The terms of production and optimizing the usage of energy, water and electricity. The social conditions of production processes. The choice of materials, products, and the quality of their life-cycles. All of these issues combined makes up a complex whole.

The overall goal for VRSE is to make it easy to invest in and implement sustainable choices. VRSE can be planned and built as a full concept, but also in parts. VRSE contains a flexible range of actions and investments to suit any site, both green- and brownfield as well as any level of ambition and desired cost.

The foundation of VRE lies strong and steady. When it comes to impression, VRSE builds on consistency. The sheer translucency of the facade, the contrast between warm and cold. Scandinavian heritage through quality, look and feel.

11.1.

INTRODUCING VRSE 2. FOCUS AREAS



The fundamentals of VRSE has been analysed to cover the main areas of sustainability. VRSE offers a wide array of actions to help address everything from global CO2 emissions to the quality of the indoor climate.

The main goal of VRSE is to help create smart, resilient sites that will cope with changing weather conditions and making sites more profitable by lowering energy costs. VRSE aims to do this by ensuring that a sustainable building process can take place, by using the right materials and constructions. A wooden building speaks for itself. To construct in wood is a straight answer to the climate crisis



due to its low emissions compared to steel and concrete. While the forests regrow, a wooden building helps reduce the carbon in the atmosphere by storing it. And, because of its light weight, wooden structures can be erected faster than steel ones. Construction workers at wooden building sites have better conditions, too. This makes wood a natural choice for VRSE.

The roof of the showroom in VRSE is remodelled to draw use of untapped potential and helps to reduce energy costs. In wood, of course, this smart saw tooth construction helps to better make use natural lighting conditions and natural



ventilation, optimizing the sites energy use. The angle and position of the roof makes it perfect for adding solar panels to the site and helps to further decrease the energy bill. These can also be added to the new, VRSE Canopy Roof. When energy from an outer source is needed to fill in the gap, sustainable energy can be bought from a local provider.

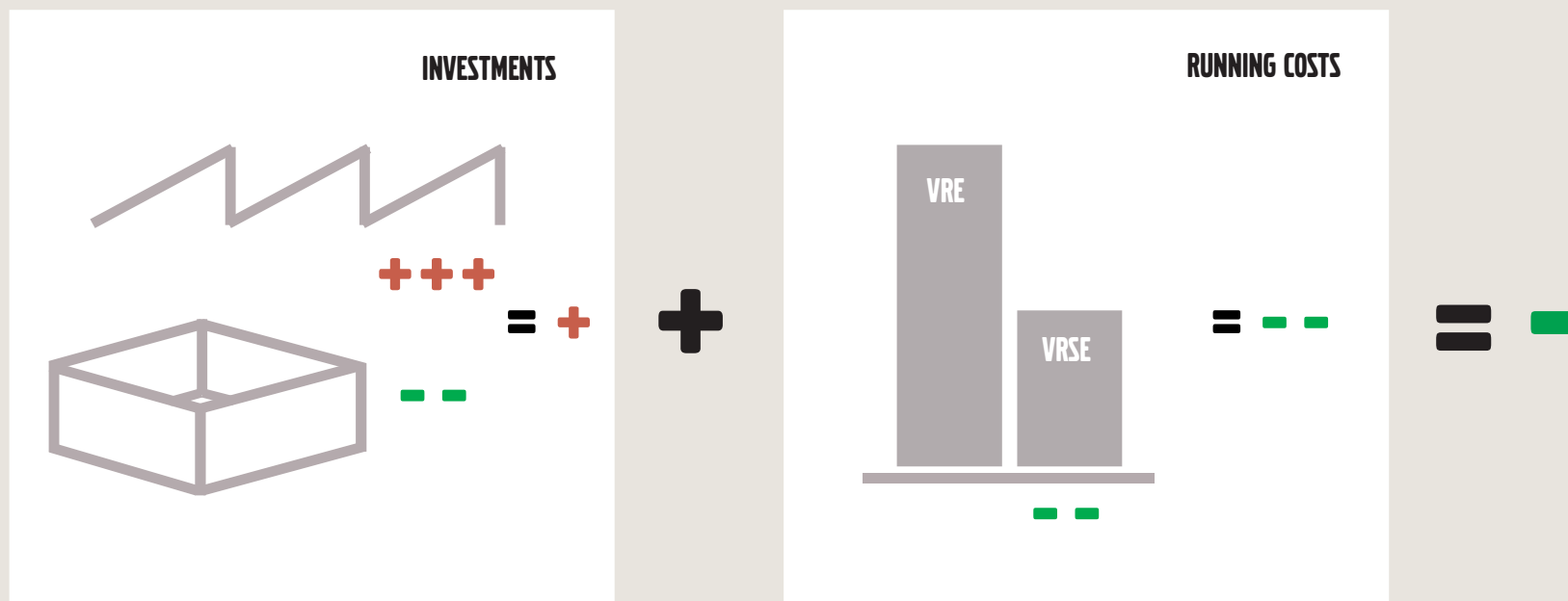
VRSE is designed to be able to cope with extreme temperatures and rainfall. Therefore, the risks and insurance costs can be lowered. Parking lots are traditionally made up of hard ground, setting the surroundings at risk at potential floods. The loss of greenery



and natural biodiversity also jeopardizes values that could be easily added side by side to a functioning parking space. For VRSE, permeable areas are planned for, as well as large areas of greenery adapted to the local biotopes.

Quality continues to lead the way for Volvo interiors. For VRSE, the furniture list has undergone an evaluation process that have taken all angles of sustainability into consideration, making sure the items has the smallest impact on people, environment and climate as possible.

11.1.

INTRODUCING VRSE
3. COSTS

VRSE is a makeover of both environmental impacts, social impacts, and interior climate. This implies a better, but different economical logic.

When investing in VRSE, the initial costs are slightly higher than the VRE. But reduced running costs, mainly from heat and cooling but also lighting, ensures a better total economy for the site.

A saw-tooth roof is more expensive than a flat roof, but it creates possibilities worth much more during use.

Solid walls, even in cross laminated timber is a lot cheaper than glass facades. A well insulated shell is also a bit more expensive, but pays back its revenue fast by reduced energy use.

With low interest rates, a shift of focus from cheap investment to low running costs is a sensible and environmentally friendly way forward.

VRSE

11.2.

VRSE HERO SITE 1. EXTERIOR BUILDING



The VRSE Hero Site Exterior builds on the appearance of the VRE exterior concept. White sleek facade, highlighted entrance, the striking visibility of the blue shield and the 1200 mm grid.

However, there are some changes worth mentioning. Instead of having light coming in from the facade, The VRSE Hero Site has light coming in from north facing windows in the roof. The south facing side of the roof provides optimal

conditions for utilizing photovoltaic panels. This highly functional roof is the crown of VRSE, and underlines the essence of the concept.

The outer shell of the facade will still consist of an etched glass while the inner walls will be made from solid wood, a energy efficient LED backlight will be placed in the bottom of the gap between the two layers, to create the glowing effect.

The shop windows, with their wooden portals, will continue to bring warmth to the icy facade, to give an inviting glimpse of the inside. The contrast between coolness and warmth continues to be a crucial part of the visual experience, both of the exterior as well as the interior.

VRSE

11.2.

VRSE HERO SITE 2. EXTERIOR LANDSCAPE



The VRSE site has many qualities linked to resilience against flooding, both that of the site, but also to the surrounding areas. By making a larger amount of the hard paving of the parking area permeable, we ensure that storm water can move and drain in a sustainable way.

The VRSE site also keeps a larger amount of greenery than before. By respecting the local biotopes, and planting only plants that are easy to manage, the VRSE

site helps to contribute to biodiversity. A smart and visually appealing way to make a positive change.

The VRSE Canopy Roof is a revision of the Canopy Roof of VRE. The construction is made from wood, making a clear visible statement, using bolts and screws to hold it together. It is sophisticated, yet simple.

Of course, the charging poles has a

natural place in the parking area and will continue to have so in the future.

VRSE

11.2.

VRSE HERO SITE 3. LIVING ROOM



The key changes made to the VRSE Living Room adds value and function, and helps to tune the materials and their spread to better suit the new look and feel of the VRSE space.

The materials of the Living Room continues to create a welcoming space. The walls of the living room is covered in wooden battens, adding warmth and natural sophistication together with the

wooden floor - just like in VRE, but in a different scale.

For sustainable reasons, the bespoke furniture of VRSE has a lighter construction and look. The reception area desks are also smaller, making the space more efficient. The VRSE Lifestyle Shop is clearly positioned next to the reception, making the visitors meet the brand through luxurious, hand

picked items, directly when entering the showroom. The backdrop of the reception is re-modeled to better suit the generous ceiling height. The construction is lighter, the materials fewer.

The living room is re-planned to make place for the VRSE Your Car Studio and the VRSE Clean Water and Coffee Station. By placing these functions close to each other, an even more social and

relaxed vibe is created during interaction with the customer in the Living Room.

VRSE

11.2.

VRSE HERO SITE 4. THE STREET



Spacious, sharp and focused. The Street of VRSE is, like always, a space specialized to show off cars in a clear and commercial manner. When entering a VRSE Hero site, the customer will see a white wooden sculpture, exclusive for VRSE sites. A great piece for decoration as well as conversation about VRSE and Volvos work for sustainability.

The new features of the VRSE building gives the showroom more natural light to

use, but of course, in combination with a energy efficient LED lighting system. The display of the cars and the conditions required should never be compromised, but optimized. In VRSE, they are. The walls, in white pigmented cross laminated timber, also adds to the light and fresh appearance of the Street.

By moving functions like Your Car Studio into the Living Room, and rearranging the Accessories Hub, space can be released

in the Street. The result is not only being able to show one more car, but overall a more spacious look and feel.

The windows of the VRSE Sawtooth Roof can be opened, letting air flow in from above, when suitable. The natural ventilation systems of VRSE provides the showroom with fresh air at any site.

The interior building materials of VRE are all OK from a sustainable POV. Make sure

the grouts used in your site when tiling walls and floors are toxic-free, as grouts can be a source to unnecessary toxicity. This also counts for sealants when moulding concrete floors.

In VRSE, the use of expanded metal should be restricted to a minimum. All handles and details of metall should be stainless-steel, and free of zink.

VRSE

11.2.

VRSE HERO SITE 5. FURNITURE & DETAILS



VRSE aims for a climate-friendly retail environment free from toxics, that cares for the whole life-cycle of all components and that continues to deliver scandinavian quality and sophistication.

By adding notes of handicraft and small scale production accessories, such as hand-blown glass from a small european glasswork or hand-carved wooden stools from a UNESCO World heritage protected carpentry - we make sure the VRSE concept is evolved without removing it from its roots.

When it comes to durability and quality - the VRE concept already holds a high



standard with classics like Wegner's wishbone and shell-chair leading the way. Scandinavian design means quality in both execution and durability over time. This continues to be a leading star for the Volvo retail experience as a whole. VRSE furniture and materials have been analyzed in depth. Material, design and production processes, all aspects of the products life cycle have been taken into consideration.

By choosing products from the VRSE furniture catalogue, the good choices have already been made for you. Natural materials such as wood, leather, stone and undyed wool have a natural place

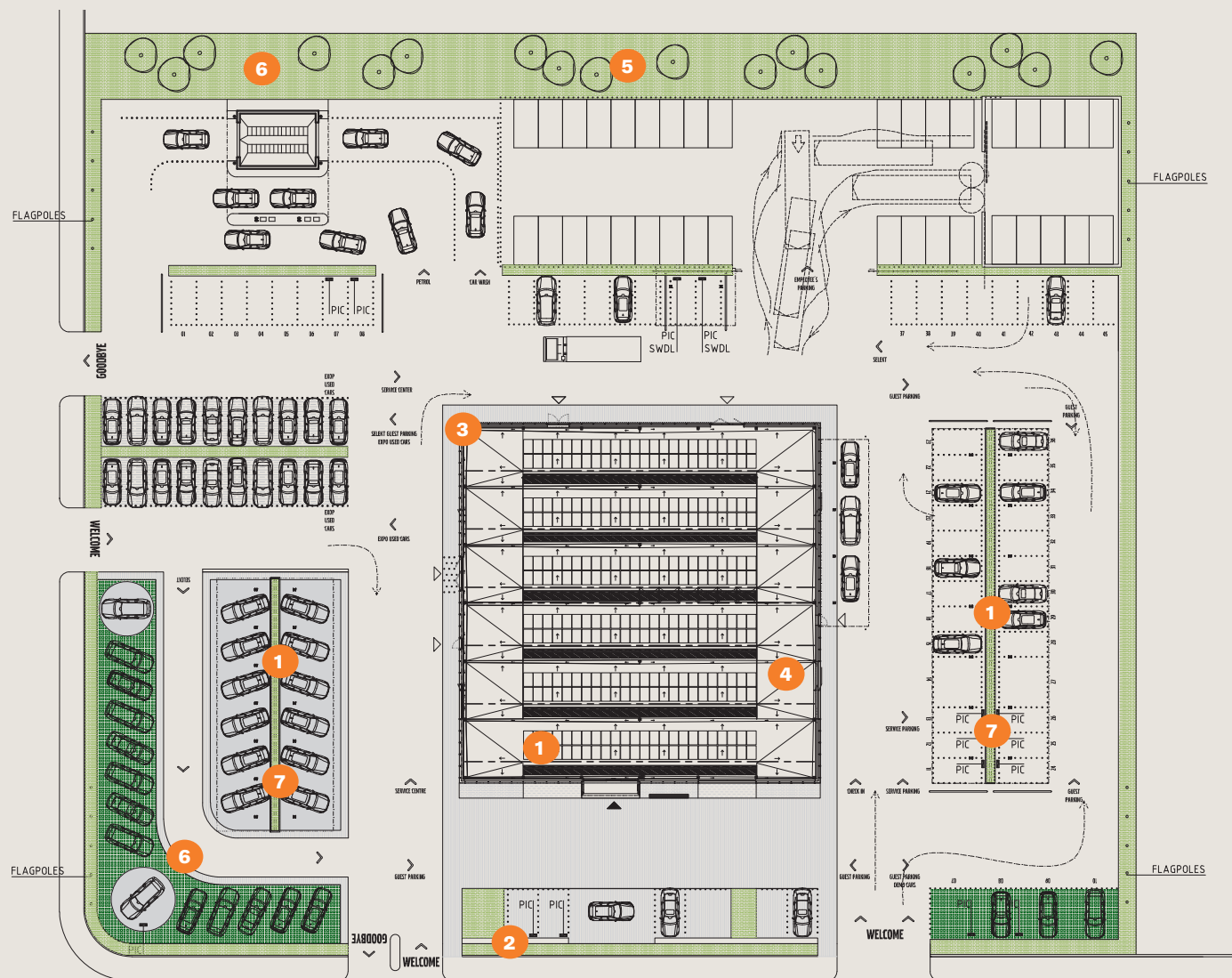


in the VRSE interior. Materials that are toxic when produced and difficult to recycle such as epoxy or acrylic composites have largely been replaced with better alternatives. Designs that are manufactured far away from the producer and designer, and that have unclear production conditions are replaced with such that are produced locally, with more transparent production processes.



11.3.

1. Photovoltaic Panels
2. Charging Poles
3. Wooden Load Bearing Structure
4. Sawtooth Roof
5. Biodiversity & Greenery
6. Storm Water Handling
7. VRSE Canopy Roof



VRSE

11.3.

VRSE PRINCIPLES 2. INTERIOR OVERVIEW

1. VRSE Clean water & coffee station
2. VRSE Your Car Studio
3. VRSE Accessories Hub
4. VRSE Lifestyle shop
5. VRSE Backdrop
6. VRSE Kid's Lounge
7. VRSE Sculpture



11.4.

RENEWABLE ENERGY 1. AGREEMENT

In VRSE, all energy for heating, cooling, lighting and any other operational electricity such as for charging cars are bought from renewable sources, when it is not covered by the sites own photovoltaic panels.

Agreements for renewable energy must be made for a period of at least 2 years. Renewable energy means solar-, wind-, hydro-, geothermal-, bio-, wave- or tidal energy.

Consists of:

- An energy agreement providing the site with exclusively renewable energy, signed for at least 2 years.



VRSE

11.4.

RENEWABLE ENERGY 2. PHOTOVOLTAIC PANELS & CHARGING POLES

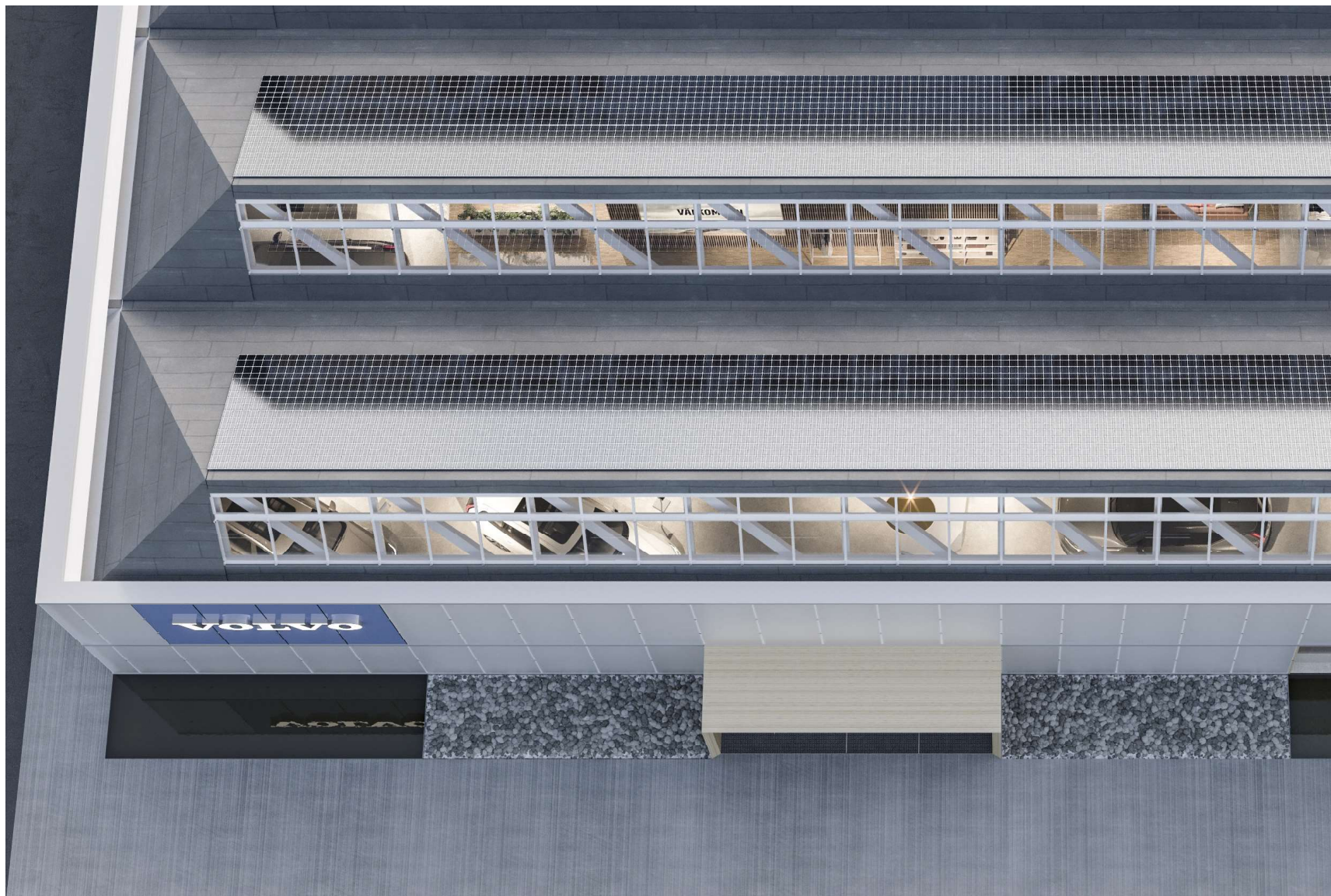
The photovoltaic panels of VRSE producing clean solar electricity replace fossile fuels in regional energy grids and reduce the overall carbon dioxide emissions.

Dimension the entire system in accordance to the buildings annual primary energy usage. Use the excess energy to charge cars.

Panels are positioned on the south facing slopes of the roof.

Consists of:

- A photovoltaic system producing more primary energy than the buildings total need.
- Charging stations in accordance with VRE Charging Infrastructure Guidelines.



11.5.

WOODEN LOAD BEARING STRUCTURE

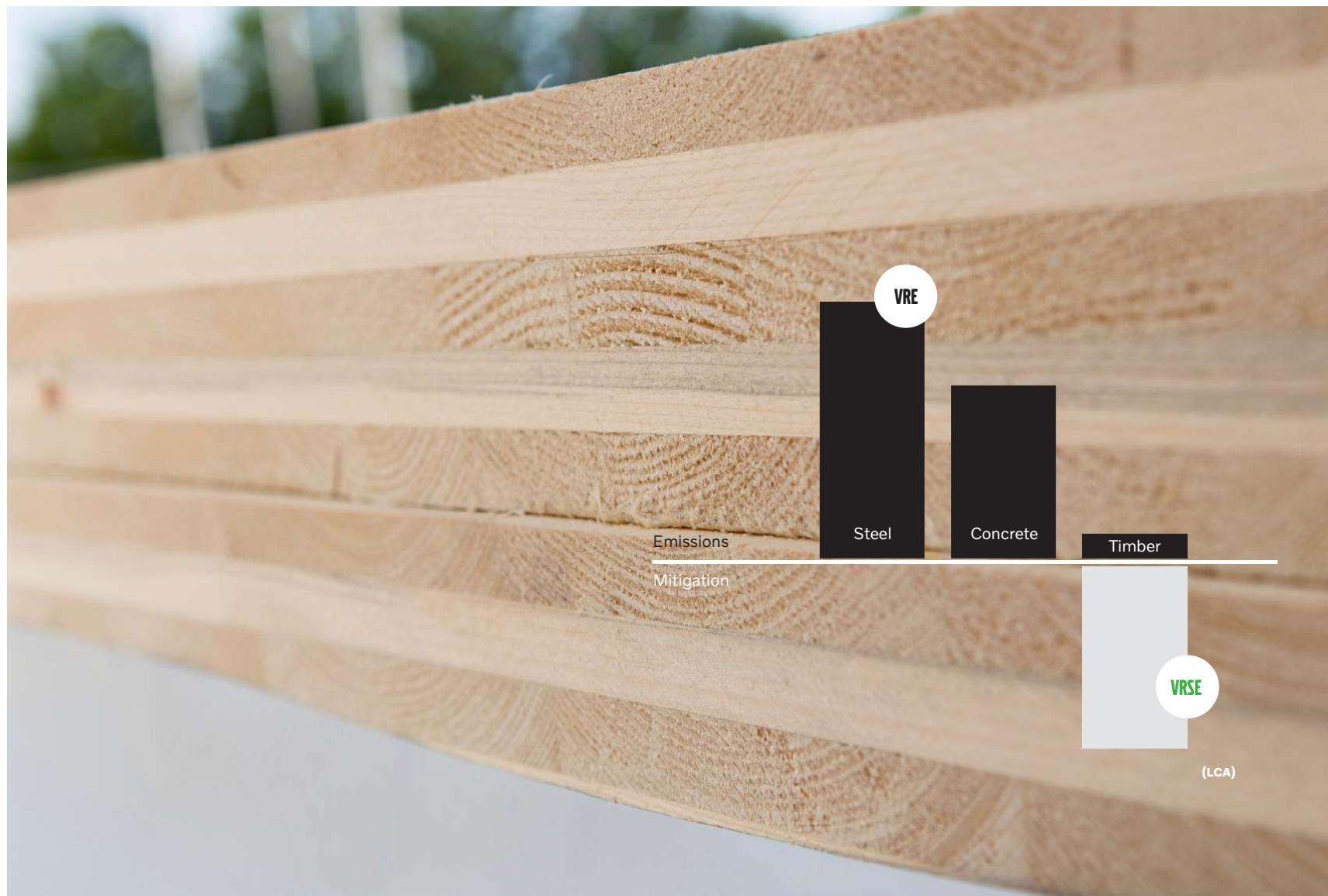
The wooden building structure replaces the current one in steel. This does not only reduce CO₂ emissions by about a factor of 10, it is also beneficial in regards of fire safety and in some markets cheaper than steel.

Using a wooden construction, the climate impact of load bearing parts is diminished while its carbon storage exceeds the emissions during production, driving the building to carbon neutrality.

Wooden interior is also an important notion of sustainability. The load bearing systems should therefore be visible to a large extent.

Consists of:

- Wooden vertical load bearing system
- Wooden intermediate floors
- Wooden load bearing system in roof
- Visible wooden load bearing structure
- Structure constructed for disassembly



VRSE

11.6.

SAWTOOTH ROOF

To let in good daylight levels without getting excess heat, a north facing saw-tooth roof is installed. The roof also facilitates the need for natural air extraction to prevent overtemperatures.

The roof is carried by a wooden lattice beam and cross laminated timber.

Consists of:

- North facing 60° angle slope
- Wooden load bearing structure including lattice beam
- Automated ventilation windows at high indoor temperatures
- North facing windows securing daylight
- North facing glass 15 % of floor area



VRSE

11.7.

VRSE CANOPY ROOF

The VRSE Canopy roof is a climate neutral, energy producing evolution of the Canopy Roof. Light and sophisticated, with frameless photovoltaics laminated between a glass and a glulam wooden structure.

In central Europe, the VRSE canopy roof produces about enough electricity to power the electric cars parked under it about the 13 000 km that is considered normal for EU.

Thin, frameless, monocrystalline photovoltaics, 2 by 1 meters, are used and mounted using a rubber strip. They provide good shading and have a maximum of 10 % transparency.

Consists of:

- Wooden load bearing pillars and beams.
- Monocrystalline frameless glass-glass photovoltaics.



11.8.

BIODIVERSITY & GREENERY

Urban greenery is a necessary source for wellbeing and flourishing life. VRSE uses local biotopes and wild meadow-plants as role models for the greenery planted on site, both in planting beds and under parking lots. This helps to provide havens for local biodiversity and reduce the need for maintenance.

A VRSE site makes use of existing natural greenery, trees or other larger plants, if possible.

Consists of:

- >10 % of parking lots on site with either reinforced grass or rain gardens
- 20 % green structure on site



11.9.

STORM WATER HANDLING

When hard surfaces are built to a larger extent and with extreme weather getting more common the risk of floods is increased.

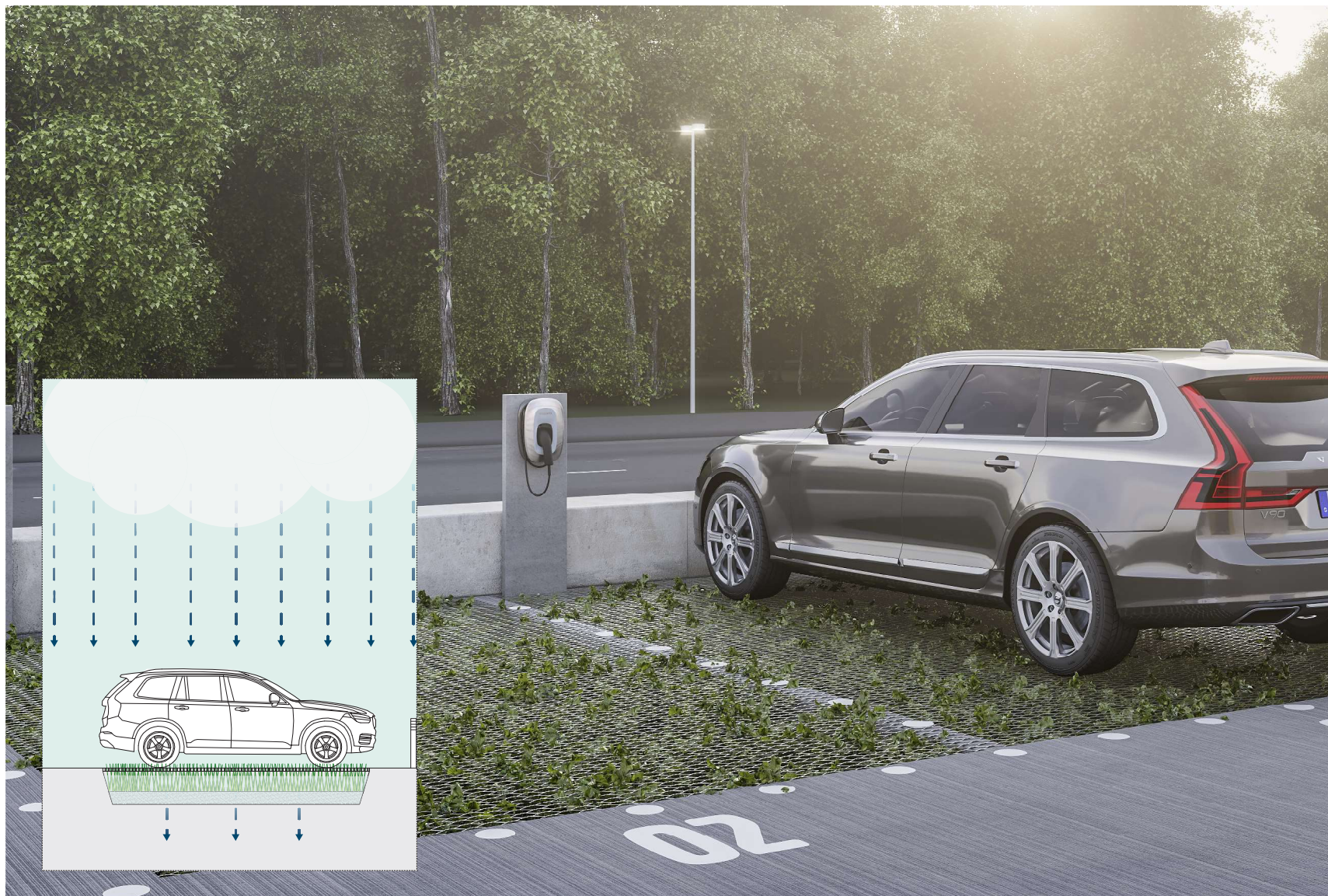
Many markets demand for new developments to take storm water management into account when planning buildings or landscapes.

The VRSE site is designed to handle a 100-year interval rain. It includes a system of delayed runoff or local infiltration.

Infiltration on sites helps replenish local water sheds and prevents drought.

Consists of:

- 25 % permeable area on site
- Storage of storm water is 50l per m² on site
- Storm water infiltration on site or slow runoff



Rain gardens store water and prevent flooding while creating havens for biodiversity.

11.10.

WATER SAVING & REUSE

Water use is a growing issue all over the world. A retail site uses most of its water during car wash. An efficient reuse of water in the car wash facility is an important part of the sustainability work.

Taps within the showroom and workshop, as well as high pressure washing systems in the workshop, use far less water than the car wash. Even so, these need to be of a water saving type, to show the intentions.

Consists of:

- Car wash system is in average using less than 75 l per car.
- Washing within workshops are done with high pressure washers that reach at least 1 500 bar.
- Taps installed are of a water saving type.



11.11.

EFFICIENT VENTILATION 1. HEAT RECOVERY

For VRSE sites in temperate and cold climates, where heat demand dominates energy use, a heat recovery system is used. This system gives at least 80 % of the heat lost in exhaust air back to the supply air. The system needs to have energy efficient fans.

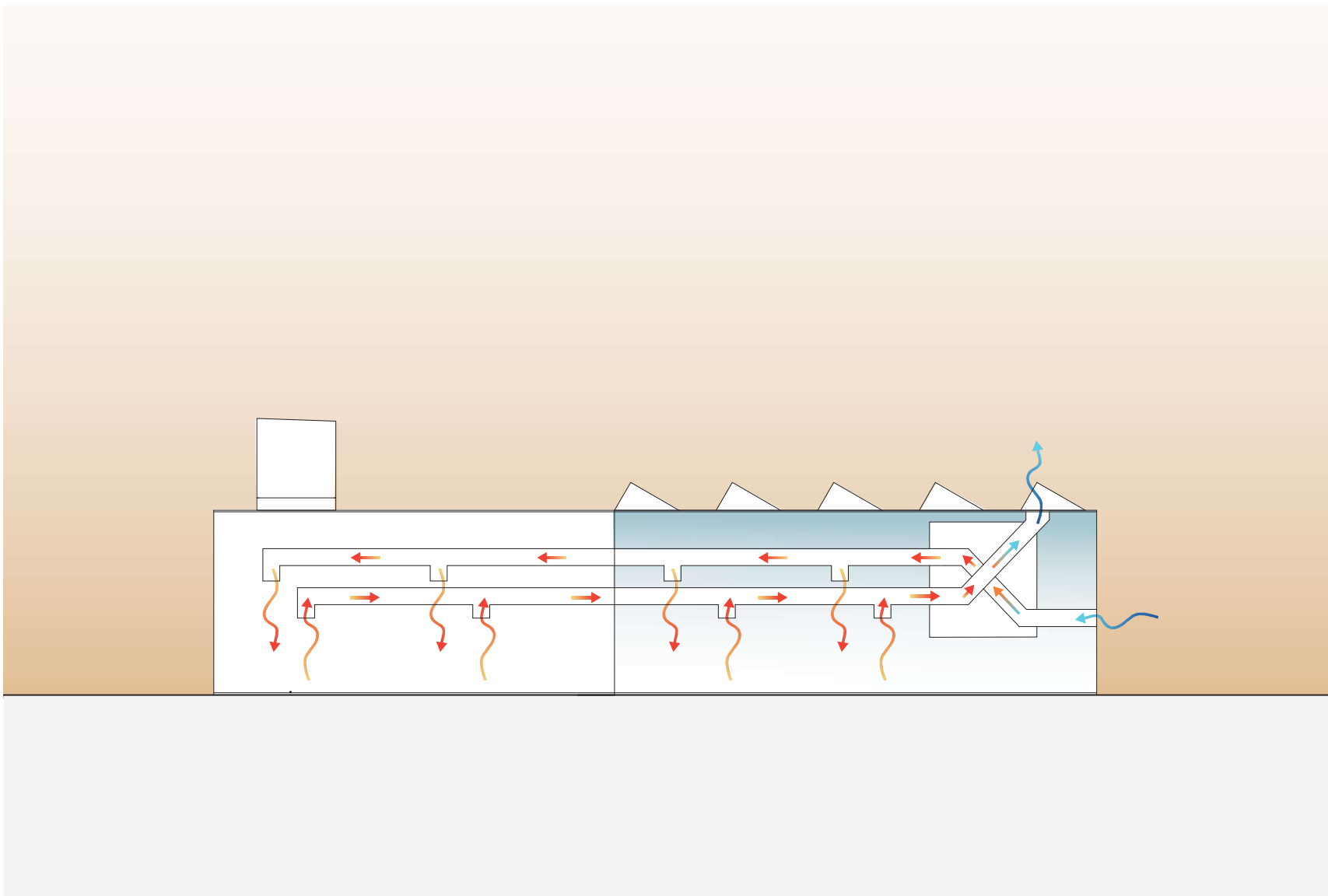
Good indoor climate is mainly a product of a correctly planned and installed ventilation system. The indoor climate is simulated during the planning process to ensure a good and healthy indoor climate.

For VRSE sites in southern climates, a ventilation system using ground duct or geothermal brine for preheating and hybrid natural ventilation is used. See next page.

A very simple indoor climate manual should be delivered for every VRSE site, giving all employees tools to create their preferred indoor climate.

Consists of:

- Automatic ventilation control
- Ventilation with preheat or heat exchanger
- Automatic windows for summer ventilation
- Indoor climate manual



11.11.

EFFICIENT VENTILATION 2. NATURAL PRE COOLING

For mediterranean and arid climates, where cooling is more demanding than heat, a ventilation system using ground duct or geothermal brine for pre-cooling and pre-heating air is used.

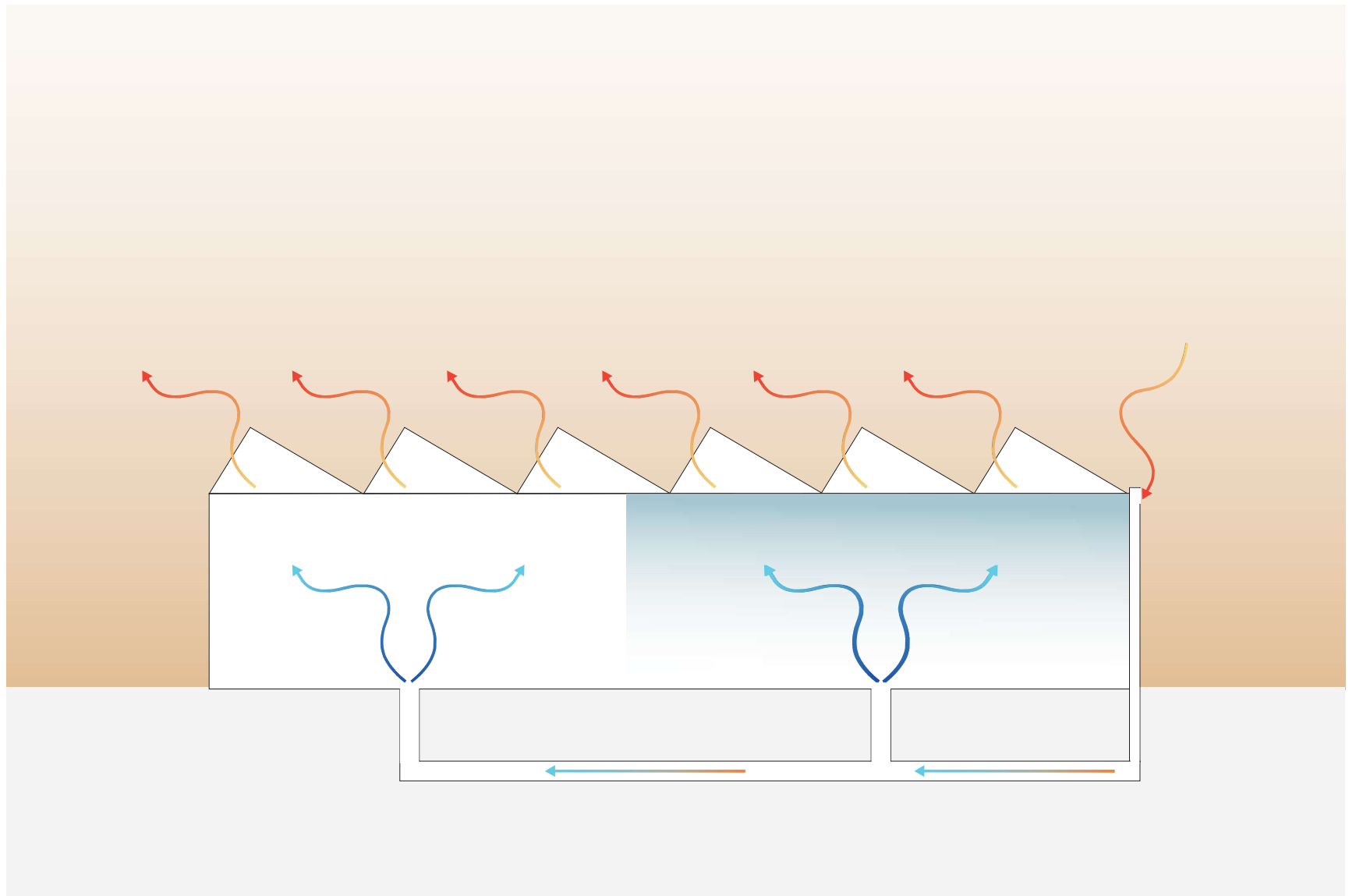
Very low air speeds makes for low energy use by fans or even natural driving forces. Automatic windows for exhaust air can be installed in the saw-tooth roof.

Precooled and preheated natural ventilation can be a very efficient model for controlling the indoor climate, especially for sites in warmer climates. By utilizing night cooling and correct airflows by smart control systems, the energy use is kept low. The simplicity of the system assures a good functionality over time.

Encircling half the house with the pipe reduce installation costs.

Consists of:

- Automatic ventilation control
- Ventilation with preheat or heat exchanger
- Automatic windows for summer ventilation
- Indoor climate manual



VRSE

11.12.

LIGHTING

A VRSE site utilizes smart systems for automatically adjusting the indoor lighting scheme to daylight levels.

This makes the site flexible and efficient while showing the cars in the best commercial manner, lowering both energy usage and cost.

LED with at least 85 lm/W should be used for all fittings.

Consists of:

- 100% LED lighting on site
- Lighting that automatically adapts to daylight



11.13.

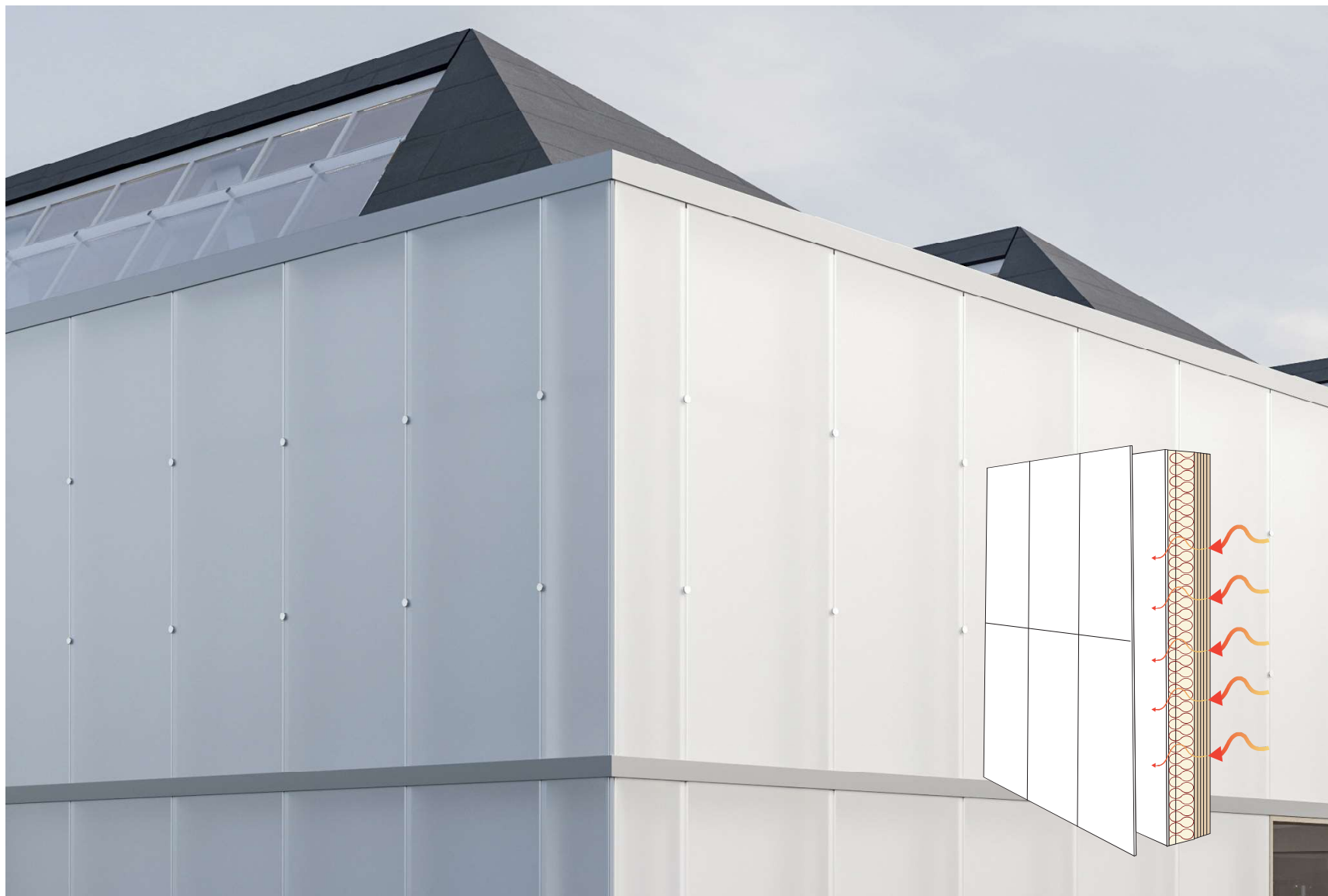
INSULATED SHELL

The insulated walls of the VRSE building makes the indoor climate much easier to control. The need for heating and cooling is of course also reduced considerably.

In VRSE, both showroom and workshop facades are insulated at a normal level for the local climate. The facade is then covered in white etched glass, back-lit by LED. The workshop doors are air-tight when closed.

Consists of:

- Etched glass facade
- Insulated facade



VRSE

11.14.

ENVIRONMENTAL CERTIFICATION

By using another and a wider environmental certification system in addition to VRSE, additional values are added. It is often considered a good investment to certify a building in accordance to international standards.

The VRSE Mandatory and Recommended points support both BREEAM, LEED and similar national systems, but additional evidential requirements are needed and is to be done by an external part.

In VRSE, building materials as well as products are non toxic, to protect both users and producers. This is an important prerequisite for any external system.

Consists of:

- Project certified by BREEAM, LEED, or similar system.
- No toxic materials either from the ECHA Reach Candidate or Authorization lists are being used.



VRSE

11.15.

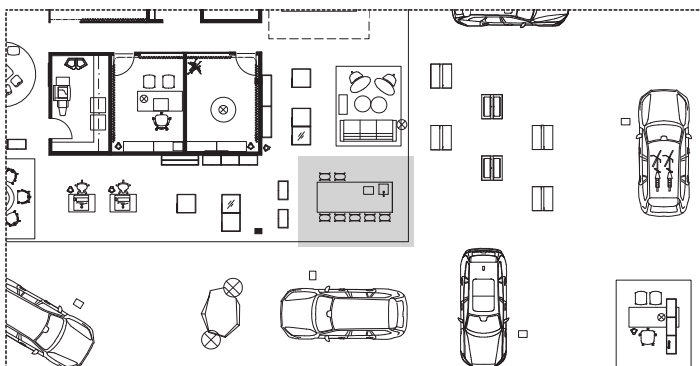
VRSE CLEAN WATER & COFFEE STATION

The VRSE Clean Water and Coffee Station is a kitchen island placed in adjacency to Your Car Studio and Lounge that allows guests to sit down and have a fika, discuss cars and have look at design options on the table top. Also overlooking the Accessories Hub, this is a good place for customer contact in a relaxed manner.

A coffee machine with manual qualities is preferred, to create a sense of high quality and slow handicraft. The tap water should be drinkable. Install proper filters to avoid the use of plastic water-bottles.

Consists of:

- Staffed Barista Bar
- Coffee serving
- Water serving
- Space for buffet
- Space for bar seating
- Space for browsing through Your Car Studio Items



Plan

VRSE

11.16.

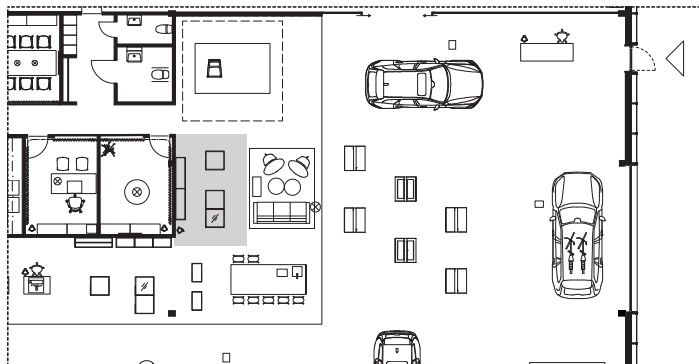
VRSE YOUR CAR STUDIO

Your Car Studio moves into the Living room and is placed adjacent to the Lounge and the Clean water station. It consists of lighter bespoke furniture and is to be placed next to a wall in the Living room.

Placing Your Car Studio in the Living Room creates a sense of relaxed accessibility and curiosity among visitors.

Consists of:

- Color & Trim Display
- Explorer screen with car configurator
- Drawer system for trims and detail samples
- A place for working with the samples
- Trays for gathering your samples
- Binders for all car samples, for customers to borrow from Dealer.



Plan

11.17.

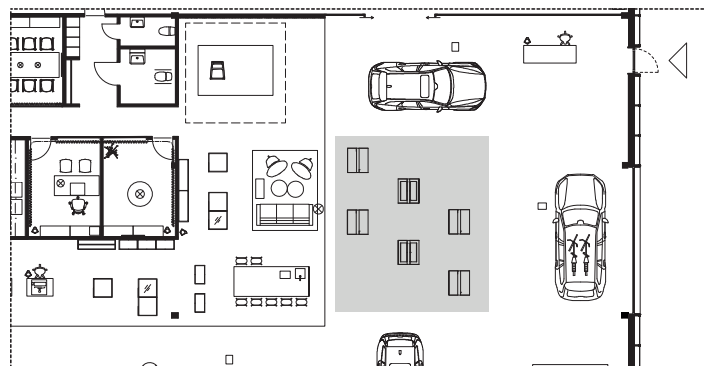
VRSE ACCESSORIES HUB

The VRSE Accessories Hub should be fully visible directly from the Living room and the Lounge, ensuring a good view for customers seated in the Living Room.

The stands should not be placed up against a wall, but placed in a formation that allows the visitor to browse and see the full collection available in a unhindered way, among the cars in the showroom.

Consists of:

- Fully accessorized car
- Freestanding Display Stands
- Physical Wheel display
- Physical Child Safety display
- Physical Cargo display
- Winter Wheel Stand or Wheel Stand (optional)



Plan

VRSE

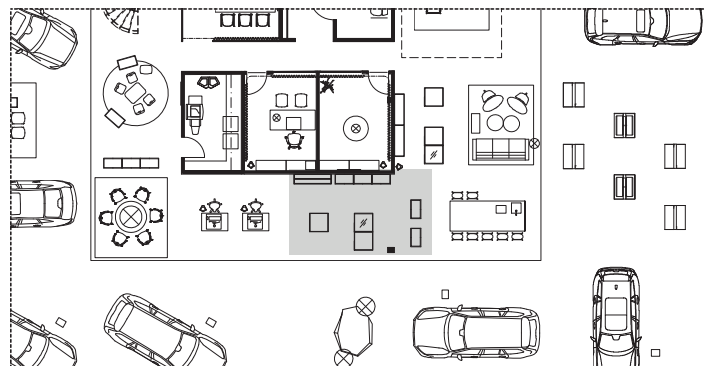
11.18.

VRSE LIFESTYLE SHOP

The VRSE Lifestyle Shop should be placed next to the reception desks in the welcome area, as a central part of the site. This is an important spot to show off the brand. Light bespoke furniture should display lifestyle items in a uncluttered and sophisticated way.

Consists of:

- Display units
- Shelving unit
- Clothing rack
- Mirror
- Pricing system



Plan

VRSE

11.19.

VRSE BACKDROP

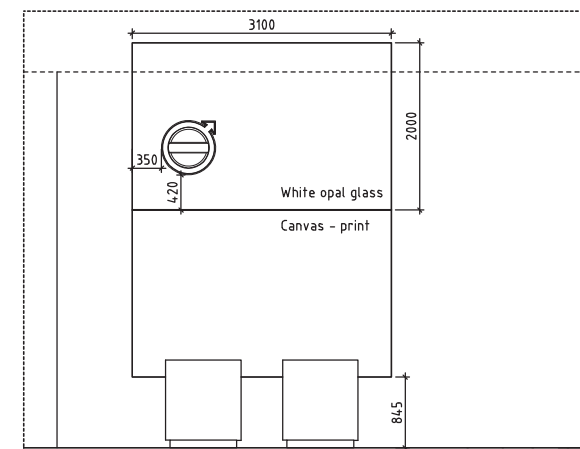
The VRSE Backdrop will have dimensions suited for the increased ceiling height in the VRSE site. Less materials are used, to create a lighter, more sustainable signage.

The backdrop is recessed into the wooden battens in the back of the reception area. The frame is a discrete, light weight metal structure, in black.

A printed canvas made of sustainable fabric is put inside the frame and is not to be covered by glass. This, in order to save material and create a lighter construction, easier to ship and mount.

Consists of:

- Iron Mark on opal glass
- A large scale image printed on canvas backlit by LED
- Light metal structure for framing, in black
- Functional storage



Elevation of the Backdrop

VRSE

11.20.

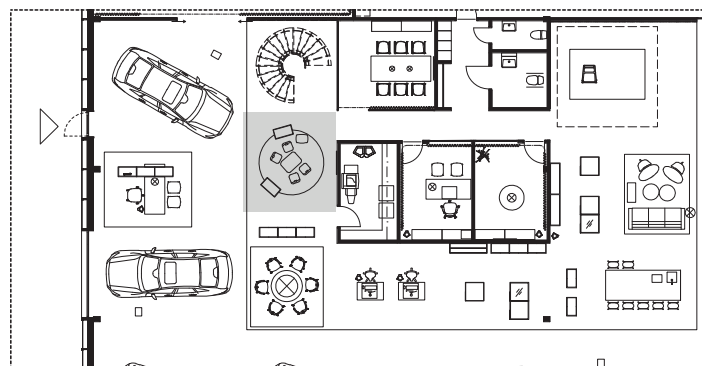
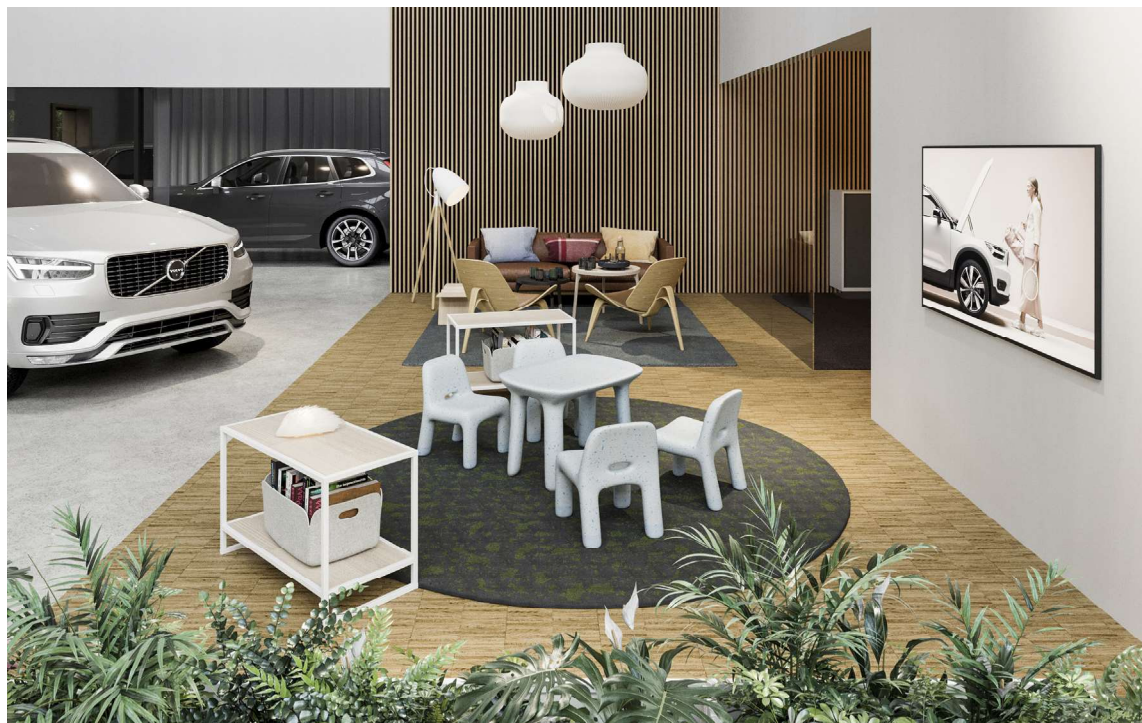
VRSE KID'S LOUNGE

The Kid's Lounge of VRSE consists of playful furniture in recycled material. Here, books, paper and crayons are central to promote creativity in a sustainable way, as well as some toys and lamps inspired by nordic fauna.

The tactile and fantasy-provoking VRSE Kid's carpet is inspired by the nordic woods and moss-clad stones.

Consists of:

- Comfortable and playful seating
- Generous carpets
- Low free standing shelf
- Digital game consoles and screen
- Analogue games
- Books, paper and toxic-free crayons
- Animal toys from nordic fauna



Plan

VRSE

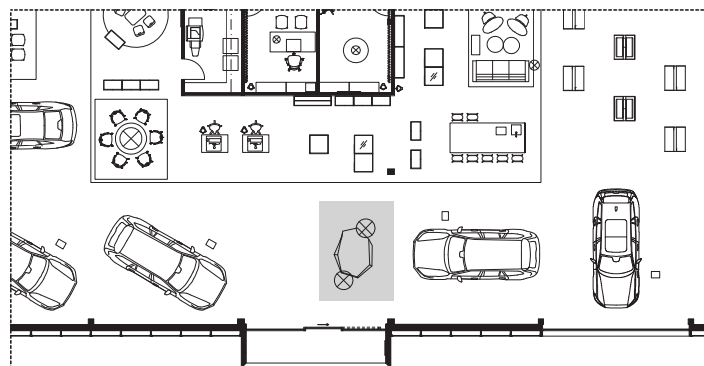
11.21.

VRSE SCULPTURE

The eye-catching VRSE sculpture is an exclusive feature for sites that fulfill all VRSE criteria. This conversation piece bears resemblance with a diamond or a ice floe. It also functions as a seating module and is made of white stained plywood. Lightweight, sophisticated and sustainable. It is crowned by exclusive pieces of golden mirroring lighting fixtures.

Consists of:

- Sustainability sculpture in plywood
- Pendant lighting

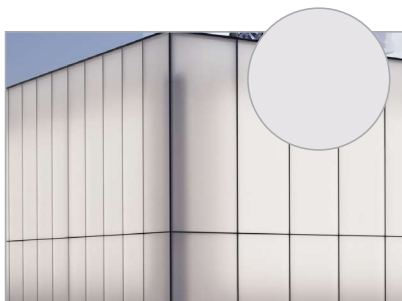


Plan

VRSE

11.22.

SURFACES
1. FACADE



Etched Glass

Area: VRSE Showroom facade.

Product:

Outer pane:

Surface #1:

Manufacturer:

VRSE

11.22.

SURFACES

2. ROOF



Photovoltaic panels

Area: VRSE Showroom roof, Sawtooth roof
Description: Frameless photovoltaic panels
Manufacturer: Solitek or similar



Photovoltaic panels

Area: Wooden Canopy
Description: Monocrystalline glass-glass photovoltaic panels
Product: Solid pro or similar
Manufacturer: Solitek or similar



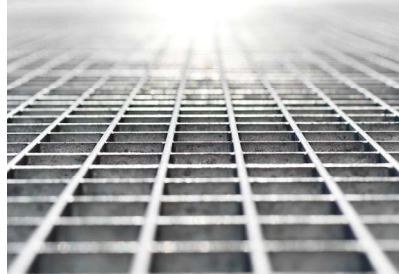
Ventilation window

Area: Saw tooth roof
Description: XXX



Local meadow biotope

Area: Greenery across the entire site
Type: Local meadow plants mixed to produce an aesthetical view and needing less maintenance and water.



Parking lot metal mesh

Area: Rain garden parking lot.
Type: By lowering a parking lot and covering it with metal mesh, the lot can handle large amounts of storm water and be an important site for local biodiversity.



Reinforced grass

Area: Green parking lots
Type: Reinforced grass mesh made from metal or concrete.



Ventilation intake tower

Area: One per site in greenery
Product: Ventilation tower
Surface: Black powder coated metal
Manufacturer: Hallströms or similar

VRSE

11.22.

SURFACES

5. INTERIOR WALLS



White pigmented cross laminated timber

Area: Inner walls

Type: CLT panel

Surface: White pigmented, quality of CLT surface for interior visible surfaces.

Producer: Martinsson, Binderholz, KLH or similar.



Wooden battens

Area: Living Room.

Description:

VRSE

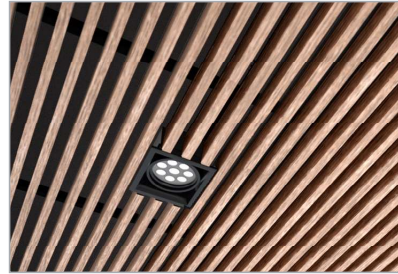
11.22.

SURFACES 6. CEILING



White pigmented cross laminated timber

Area: Inside ceiling
Type: CLT panel
Surface: White pigmented, quality of CLT surface for interior visible surfaces.
Producer: Martinsson, Binderholz, KLH or similar.



Wooden Batten Ceiling Alt1

Area: Saw tooth roof, interior, over the Living Room



Wooden Batten Ceiling Alt2

Area: Saw tooth roof, interior, over the Living Room



Glulam wood

Area: Saw tooth roof
Type: Glulam lattice
Surface: White pigmented
Producer: Martinsson, Binderholz, KLH or similar.

VRSE

11.23.

VRSE FURNITURE
1. SOFAS, EASY CHAIRS
& POUFS

Sustainability rating 1 to 6.



VRSE Sofa ●●●●●○
Area: Living Room.
Description: Oak frame, upholstered in leather or fabric.
Note: Option of light brown leather, brown leather, dark grey fabric.



Lounge chair ●●●●●●
Area: Living Room.
Description: Oak frame, upholstered in brown leather.



VRSE Pouf ●●●●●○
Area: Living Room.
Description: Oak frame, upholstered in fabric.
Note: Upholstered in recycled fabric, option of four colors.



VRSE Easy chair ●●●●●○
Area: Living Room.
Description: Oak frame, upholstered in leather or fabric.
Note: Option of light brown leather, brown leather, dark grey fabric.



VRSE Easy chair light ●●●●●○
Area: Living Room.
Description: Nude leather and ash.



VRSE

11.23.

VRSE FURNITURE 2. CHAIRS & BAR STOOLS



Sustainability rating 1 to 6.



Chair



Area: Living Room.
Description: Ash wood in white oil, natural string.



VRSE Coffee bar stool



Area: The Street, Car Studio.
Description: Solid wood in ash, white stained.



VR Chair

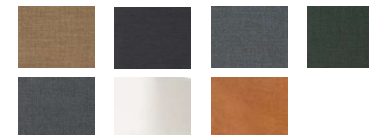
Area: Living Room, VR area.
Description: Grey fabric seat and legs in steel.



VRSE Armchair



Area: Living Room, Conference room.
Description: Matt laquered Oak legs.
Upholstered in fabric or leather. Also available with white composite seat or in cognac leather



Chair



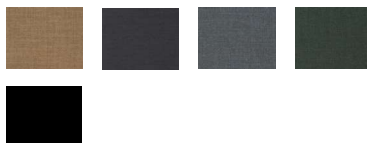
Area: Living Room.
Description: Massive ash wood, white pigmented hard wax oil.



VRSE Bar chair



Area: Living Room, Staff room
Description: Matt laquered Oak legs or black metal legs. Upholstered in fabric or black plastic seat.
Note: Option of four fabrics



VRSE Kid's Chair



Area: Kid's Lounge
Description: In ecothylene. Colour Ocean.



VRSE FURNITURE
3. WORK CHAIRS



Sustainability rating 1 to 6.



VRSE Consultation Chair



Area: Consultation Point.
Description: 5 star swivel base w. castors lacquered in grey & gas lift, fully upholstered in light grey fabric.



VRSE Visitor Chair



Area: Consultation Point.
Description: 4 star swivel base lacquered in grey, fully upholstered in light grey fabric.



Work Chair, high, Alt1



Area: Reception.
Description: black upholstered chair with chrome base.



Work Chair, high, Alt2



Area: Reception.
Description: black upholstered chair with chrome base.



Work Chair



Area: Back Office.
Description: upholstered seat in black mesh, chromed base.



FURNITURE
4. LOUNGE & CONFERENCE TABLES

●●●●●●
Sustainability rating 1 to 6.



Lounge Table Large ●●●●●○

Area: Living Room.
Description: In white oiled ash



Lounge Table Medium ●●●●●○

Area: Living Room.
Description: In black laquered ash with stripe carvings on legs.



Round Consultation Table ●●●●●○

Area: Consultaion Room
Description: In white oiled ash



Wooden Table ●●●●●●

Area: Living Room.
Description: White pigmented ash veneer, legs in massive ash wood.



Conference Table ●●●●●●

Area: Staff Room.
Description: White pigmented ash.
Hardwax 2%



Kid's Table ●●●●●●

Area: Kid's Room
Description: In ecothylene, stained pattern.



VRSE

11.23.

FURNITURE 5. LIGHTING



Sustainability rating 1 to 6.



Lounge Floor Lamp



Area: Living Room.
Description: Shade in white metal, 3-legged base in wood.



Consultation Table Lamp



Area: The Street, Living room, Consultation point
Description: In cast iron, beech wood and white aluminum with red textile cord.



Mega Pendant



Area: Living Room.
Description: Shade in white string.



Conference Pendant



Area: Living Room.
Description: Extruded aluminum anodized in brass colour.



VRSE Consultation Room Pendant



Area: Consultation Room
Description: Matt aluminum shade and textile cord. Xsmall
Note: Option of colours sand and grey.



VRSE Staff Room Pendant



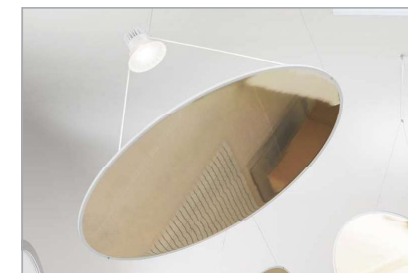
Area: Consultation Room
Description: Matt aluminum shade and textile cord.
Note: Option of colours sand and grey.



VRSE Table or floor lamp



Area: Living room
Description: White blown glass and aluminium.



VRSE Hero Pendant



Area: The Street
Description: Aluminium body structure, plastic shader, Disk in gold.
Note: Only to use over the VRSE Sculpture, The Ice floe.



VRSE

11.23.

FURNITURE 5. LIGHTING



Sustainability rating 1 to 6.



VRSE Lounge Pendant Ø60



Area: Living Room.
Description: In white. Bamboo fibres and polypropylene.



VRSE Lounge Pendant Ø80



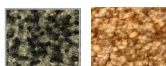
Area: Living Room.
Description: In white. Bamboo fibres and polypropylene.



Sustainability rating 1 to 6.

**Luxurious Lounge Carpet**

Area: Living Room
Description: Thick hand-tufted carpet, 50% Botanical silk and 50% wool.
Note: Comes in three sizes in the colour Lichen and Sand.

**Kids lounge Carpet**

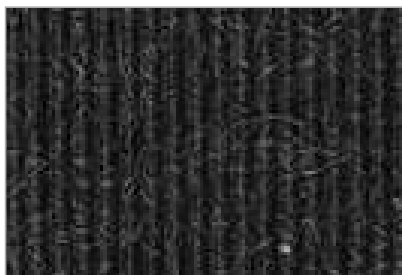
Area: Kids lounge
Description: Reound tufted carpet with pattern
Note: Comes in one size and in the colour/ pattern Moss.

**Goose Eye Carpet**

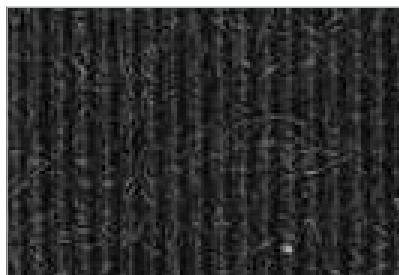
Area: Living Room
Description: Woven carpet with goose eye pattern in 100% wool.

**Wall-to-Wall Carpet**

Area: Consultation Rooms, Staff Room, Offices.
Product: Tretford.
Manufacturer: Ogeborg www.ogeborg.se
Note! Colours from different concepts can not be mixed in one room.

**Consultation Point Carpet**

Area: Consultation Point.
Description: Tufted lobed carpet, 80% wool 20% synthetic. Anthracite grey.

**VR Carpet**

Area: VR area
Description: Tufted lobed carpet, 80% wool 20% synthetic. Anthracite grey.



VRSE

11.23.

FURNITURE 7. INTERIOR ACCESSORIES - DECORATION KIT



Sustainability rating 1 to 6.



Samba Cushion



Area: Living Room.
Description: To be placed in sofas.
Note: Part of Decoration Kit Colourful.



Two Cushions Manhattan



Area: Living Room.
Description: To be placed in sofas.
Note: Part of Decoration Kit Colourful.



Cushion Horizon



Area: Living Room.
Description: To be placed in sofas.
Note: Part of Decoration Kit Colourful.



Plaid Horizon



Area: Living Room.
Description: To be placed in sofas.
Note: Part of Decoration Kit Colourful.



Vase Aalto



Area: Living Room.
Description: Vases in clear and coloured glass.
To be placed together on 700-1100 mm high tables. Part of Decoration Kit Colourful.
Note: Moss green and sea blue.



Candle Holder



Area: Living Room.
Description: Mouthblown glass in various colors. Part of Decoration Kit Colourful.



Tray



Area: Living Room.
Description: Dark green. Part of Decoration Kit Colourful.



Carafe and water glass



Area: Living Room.
Description: Mouthblown and hand-polished clear glass. Glasses to be low. Part of Decoration Kit Colourful.

VRSE

11.23.

FURNITURE 8. INTERIOR ACCESSORIES - DECORATIONS



Sustainability rating 1 to 6.



Magazine Rack



Area: Living Room.
Description: Floor magazine rack in ash wood.



VRSE Kid's Lamp



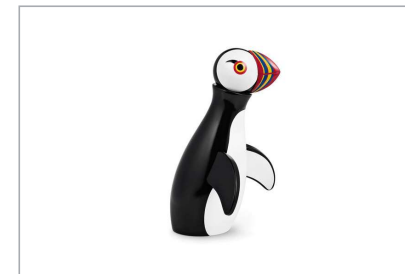
Area: Kid's Lounge
Description: In white polypropylene.
Note: Included in the VRSE Kids shelf



Storage Basket



Area: Kid's Lounge
Description: Recycled PET Felt fibers in blue grey.
Note: Included in the VRSE Kids shelf



Kid's Wooden Toy



Area: Kid's Lounge
Description: Painted beech.
Note: Included in the VRSE Kids shelf



Recycling bin Large



Area: Your Car studio and coffee bar.
Description: Large
Note: Option of Light grey, Pure White and Anthracite.



Recycling bin Small



Area: Small waste basket in Consultation Point, Offices, Consultation Rooms and Staff Room.
Description: Small, Light grey



Bowers & Wilkins Speaker

Area: Living Room.
Description: To be placed together with Scandinavian Icon group.
Note: Option of black and white



VRSE

11.24.

TABLES

4. WORK TABLE



Sustainability rating 1 to 6.



VRSE Work table



Area: Office, Back Office Consultation point
Description: Table top in ash incl. cable-through. Stand in white lacquer.
Note: Options of 1600mm, 1800mm and 2000 mm wide and height adjustable. Can be delivered with CPU holder and monitor arm.

VRSE

11.24.

BESPOKE FURNITURE 5. LIVING ROOM



Sustainability rating 1 to 6.



VRSE Clean Water & Coffee



Area: Living Room
Description: Ash veneered frames and stone top.



Reception desk small



Area: Reception
Description: White Corian

VRSE

11.24.

BESPOKE FURNITURE 1. DISPLAY



Sustainability rating 1 to 6.



VRSE Kids shelf



Area: Kids Lounge
Description: Book shelf. White lacquered steel and shelves in ash.



Display Unit Cashier.



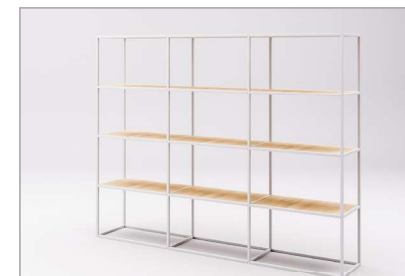
Area: Lifestyle shop, Your Car Studio
Description: White lacquered steel, ash veneer and glass.



Display Unit Medium Full Glass



Area: Lifestyle shop, Your Car Studio
Description: White lacquered steel, ash veneer and glass.



Display Unit High



Area: Lifestyle shop
Description: White lacquered steel and shelves in ash.



Display Unit Hanger



Area: Lifestyle shop
Description: White lacquered steel.



Display Unit Mirror



Area: Lifestyle shop
Description: White lacquered steel and mirror.



Colour and Trim Display



Area: Lifestyle shop
Description: White lacquered steel and leather wrapped bars.



VRSE Consultation Point Shelf



Area: Lifestyle shop
Description: White lacquered steel and shelves in ash.

VRSE

11.24.

BESPOKE FURNITURE 1. DISPLAY



Sustainability rating 1 to 6.



VRSE Planter



Area: Living Room
Description: White lacquered steel

VRSE

11.24.

BESPOKE FURNITURE
6. ACCESSORIES HUB



Sustainability rating 1 to 6.



VRSE Wheel Stand Wheels ●●●●●○

Area: Accessories hub, The street
Description: Display stand for four wheels



VRSE Child Seat Shelf ●●●●●○

Area: Accessories hub, The street
Description: Display stand for Child Seats



VRSE Stand for roof and hitch ●●●●●○

Area: Accessories hub, The street
Description: Display stand for roof and hitch products to carrying bikes etc.



VRSE Stand for Roof Box ●●●●●○

Area: Accessories hub, The street
Description: Display stand for Roof box.

11.25.

VRSE EVALUATION FORM

For the requirements listed below, please indicate the level of compliance for each requirement. The level of compliance is defined as follows:

- M: Mandatory
- N: Not required
- O: Optional
- R: Recommended
- *: Only applies to new materials and products

Requirement	VRSE Green Book	VRSE Silver Book	VRSE Gold Book
1. Mandatory lighting	M	M	M
2. Approved materials usage	M	M	M
3. PV panel mounting and glass usage	M	M	M
4. Energy efficient materials usage (VCC approved materials)	M	M	M
5. Recycled materials usage	M	M	M
6. Recycled materials usage (VCC approved materials)	M	M	M
7. Recycled materials usage (VCC approved materials)	M	M	M
8. Recycled materials usage (VCC approved materials)	M	M	M
9. Recycled materials usage (VCC approved materials)	M	M	M
10. Recycled materials usage (VCC approved materials)	M	M	M
11. Recycled materials usage (VCC approved materials)	M	M	M
12. Recycled materials usage (VCC approved materials)	M	M	M
13. Recycled materials usage (VCC approved materials)	M	M	M
14. Recycled materials usage (VCC approved materials)	M	M	M
15. Recycled materials usage (VCC approved materials)	M	M	M
16. Recycled materials usage (VCC approved materials)	M	M	M
17. Recycled materials usage (VCC approved materials)	M	M	M
18. Recycled materials usage (VCC approved materials)	M	M	M
19. Recycled materials usage (VCC approved materials)	M	M	M
20. Recycled materials usage (VCC approved materials)	M	M	M
21. Recycled materials usage (VCC approved materials)	M	M	M
22. Recycled materials usage (VCC approved materials)	M	M	M
23. Recycled materials usage (VCC approved materials)	M	M	M
24. Recycled materials usage (VCC approved materials)	M	M	M
25. Recycled materials usage (VCC approved materials)	M	M	M
26. Recycled materials usage (VCC approved materials)	M	M	M
27. Recycled materials usage (VCC approved materials)	M	M	M
28. Recycled materials usage (VCC approved materials)	M	M	M
29. Recycled materials usage (VCC approved materials)	M	M	M
30. Recycled materials usage (VCC approved materials)	M	M	M
31. Recycled materials usage (VCC approved materials)	M	M	M
32. Recycled materials usage (VCC approved materials)	M	M	M
33. Recycled materials usage (VCC approved materials)	M	M	M
34. Recycled materials usage (VCC approved materials)	M	M	M
35. Recycled materials usage (VCC approved materials)	M	M	M
36. Recycled materials usage (VCC approved materials)	M	M	M
37. Recycled materials usage (VCC approved materials)	M	M	M
38. Recycled materials usage (VCC approved materials)	M	M	M
39. Recycled materials usage (VCC approved materials)	M	M	M
40. Recycled materials usage (VCC approved materials)	M	M	M
41. Recycled materials usage (VCC approved materials)	M	M	M
42. Recycled materials usage (VCC approved materials)	M	M	M
43. Recycled materials usage (VCC approved materials)	M	M	M
44. Recycled materials usage (VCC approved materials)	M	M	M
45. Recycled materials usage (VCC approved materials)	M	M	M
46. Recycled materials usage (VCC approved materials)	M	M	M
47. Recycled materials usage (VCC approved materials)	M	M	M
48. Recycled materials usage (VCC approved materials)	M	M	M
49. Recycled materials usage (VCC approved materials)	M	M	M
50. Recycled materials usage (VCC approved materials)	M	M	M
51. Recycled materials usage (VCC approved materials)	M	M	M
52. Recycled materials usage (VCC approved materials)	M	M	M
53. Recycled materials usage (VCC approved materials)	M	M	M
54. Recycled materials usage (VCC approved materials)	M	M	M
55. Recycled materials usage (VCC approved materials)	M	M	M
56. Recycled materials usage (VCC approved materials)	M	M	M
57. Recycled materials usage (VCC approved materials)	M	M	M
58. Recycled materials usage (VCC approved materials)	M	M	M
59. Recycled materials usage (VCC approved materials)	M	M	M
60. Recycled materials usage (VCC approved materials)	M	M	M
61. Recycled materials usage (VCC approved materials)	M	M	M
62. Recycled materials usage (VCC approved materials)	M	M	M
63. Recycled materials usage (VCC approved materials)	M	M	M
64. Recycled materials usage (VCC approved materials)	M	M	M
65. Recycled materials usage (VCC approved materials)	M	M	M
66. Recycled materials usage (VCC approved materials)	M	M	M
67. Recycled materials usage (VCC approved materials)	M	M	M
68. Recycled materials usage (VCC approved materials)	M	M	M
69. Recycled materials usage (VCC approved materials)	M	M	M
70. Recycled materials usage (VCC approved materials)	M	M	M
71. Recycled materials usage (VCC approved materials)	M	M	M
72. Recycled materials usage (VCC approved materials)	M	M	M
73. Recycled materials usage (VCC approved materials)	M	M	M
74. Recycled materials usage (VCC approved materials)	M	M	M
75. Recycled materials usage (VCC approved materials)	M	M	M
76. Recycled materials usage (VCC approved materials)	M	M	M
77. Recycled materials usage (VCC approved materials)	M	M	M
78. Recycled materials usage (VCC approved materials)	M	M	M
79. Recycled materials usage (VCC approved materials)	M	M	M
80. Recycled materials usage (VCC approved materials)	M	M	M
81. Recycled materials usage (VCC approved materials)	M	M	M
82. Recycled materials usage (VCC approved materials)	M	M	M
83. Recycled materials usage (VCC approved materials)	M	M	M
84. Recycled materials usage (VCC approved materials)	M	M	M
85. Recycled materials usage (VCC approved materials)	M	M	M
86. Recycled materials usage (VCC approved materials)	M	M	M
87. Recycled materials usage (VCC approved materials)	M	M	M
88. Recycled materials usage (VCC approved materials)	M	M	M
89. Recycled materials usage (VCC approved materials)	M	M	M
90. Recycled materials usage (VCC approved materials)	M	M	M
91. Recycled materials usage (VCC approved materials)	M	M	M
92. Recycled materials usage (VCC approved materials)	M	M	M
93. Recycled materials usage (VCC approved materials)	M	M	M
94. Recycled materials usage (VCC approved materials)	M	M	M
95. Recycled materials usage (VCC approved materials)	M	M	M
96. Recycled materials usage (VCC approved materials)	M	M	M
97. Recycled materials usage (VCC approved materials)	M	M	M
98. Recycled materials usage (VCC approved materials)	M	M	M
99. Recycled materials usage (VCC approved materials)	M	M	M
100. Recycled materials usage (VCC approved materials)	M	M	M

Creating a VRSE site is linked to complying with a number of sustainability points. These points are listed under "Consists of..." on each page of the pages 11.4-11.21 and includes the VRSE Furniture pages of 11.23.

The system have two different levels of requirements to cover most scenarios and fit all types of sites.

To comply with VRSE, fulfill all Mandatory points and at least half of the Recommended points.

- Key to requirement:**
- M Mandatory
 - N Not required
 - O Optional
 - R Recommended
 - * Only applies to new materials and products

Note: All variations need to be approved by VCC.

VRSE

11.25.

VRSE EVALUATION FORM

Key to requirement:

M Mandatory

N Not required

O Optional

R Recommended

* Only applies to new materials

To comply with VRSE, fulfill all Mandatory and at least half of Recommended points.

Please note that this is a complementary evaluation form. To comply with standard retail requirements, please fulfill the evaluation form of chapter 9.

** Please tick as appropriate

Areas	VRSE (Green field)	VRSE (Brown field)	Compliant? **	
			Yes	No
11.4 Renewable energy				
Agreement on renewable energy	M	M	<input type="checkbox"/>	<input type="checkbox"/>
Photovoltaic system producing net plus primary energy	M	M	<input type="checkbox"/>	<input type="checkbox"/>
Charging stations in accordance with VRE Charging Infra-structure guidelines	M	M	<input type="checkbox"/>	<input type="checkbox"/>
11.5 Wooden load bearing structure				
Wooden load bearing vertical structure	M	M*	<input type="checkbox"/>	<input type="checkbox"/>
Wooden intermediate floor	M	M*	<input type="checkbox"/>	<input type="checkbox"/>
Wooden load bearing system in roof	M	M*	<input type="checkbox"/>	<input type="checkbox"/>
Visible wooden load bearing structure	R	R	<input type="checkbox"/>	<input type="checkbox"/>
Structure constructed for disassembly	R	R	<input type="checkbox"/>	<input type="checkbox"/>
11.6 Sawtooth roof				
North facing 60° angled slope	M	R	<input type="checkbox"/>	<input type="checkbox"/>
Visible wooden load bearing structure	M	R		
Automated ventilation windows	R	R	<input type="checkbox"/>	<input type="checkbox"/>
North facing glass 15 % of floor area	M	R	<input type="checkbox"/>	<input type="checkbox"/>
11.7 VRSE Canopy Roof				
Wooden load bearing pillars and beams	M	R	<input type="checkbox"/>	<input type="checkbox"/>
Monocrystalline glas-glas photovoltaics	M	M	<input type="checkbox"/>	<input type="checkbox"/>

Note: All variations need to be approved by VCC.

VRSE

11.25.

VRSE EVALUATION FORM

Key to requirement:

M Mandatory

N Not required

O Optional

R Recommended

* Only applies to new materials and products

To comply with VRSE, fulfill all Mandatory and at least half of Recommended points.

Please note that this is a complementary evaluation form. To comply with standard retail requirements, please fulfill the evaluation form of chapter 9.

** Please tick as appropriate

Areas		VRSE (Green field)	VRSE (Brown field)	Compliant? **	
				Yes	No
11.8	Biodiversity & Greenery				
	Parking lots with reinforced grass or rain gardens	≥ 10 %	≥ 10 %	<input type="checkbox"/>	<input type="checkbox"/>
	Green structure of total site	≥ 20 %	≥ 10 %	<input type="checkbox"/>	<input type="checkbox"/>
11.9	Storm water handling				
	Storage of storm water per m ² of site	≥ 50 l	≥ 50 l	<input type="checkbox"/>	<input type="checkbox"/>
	On site infiltration or slow runoff	M	M	<input type="checkbox"/>	<input type="checkbox"/>
11.10	Water saving & Reuse				
	Car wash system water efficient reuse	M	M	<input type="checkbox"/>	<input type="checkbox"/>
	High pressure washing in workshop	M	M		
	Installed taps of water saving type	M	M	<input type="checkbox"/>	<input type="checkbox"/>
11.11	Efficient ventilation				
	Automatic ventilation control	M	M	<input type="checkbox"/>	<input type="checkbox"/>
	Ventilation with preheat or heat exchanger	M	M	<input type="checkbox"/>	<input type="checkbox"/>
	Automatic windows for summer ventilation	M	M	<input type="checkbox"/>	<input type="checkbox"/>
	Indoor climate manual	M	M	<input type="checkbox"/>	<input type="checkbox"/>

Note: All variations need to be approved by VCC.

VRSE

11.25.

VRSE EVALUATION FORM

Key to requirement:

M Mandatory

N Not required

O Optional

R Recommended

* Only applies to new materials and products

To comply with VRSE, fulfill all Mandatory and at least half of Recommended points.

Please note that this is a complementary evaluation form. To comply with standard retail requirements, please fulfill the evaluation form of chapter 9.

** Please tick as appropriate

Areas	VRSE (Green field)	VRSE (Brown field)	Compliant? **	
			Yes	No
11.12 Lighting				
All LED lighting on site	M	M	<input type="checkbox"/>	<input type="checkbox"/>
Lighting adaptive to daylight	M	M	<input type="checkbox"/>	<input type="checkbox"/>
11.13 Insulated shell				
Insulated facade	M	R	<input type="checkbox"/>	<input type="checkbox"/>
Etched glass façade	M	R	<input type="checkbox"/>	<input type="checkbox"/>
11.14 Environmental certification				
Project certified by BREEAM, LEED or similar	R	R	<input type="checkbox"/>	<input type="checkbox"/>
No toxic materials either from the ECHA Reach Candidate or Authorization lists are being used.	M	M*	<input type="checkbox"/>	<input type="checkbox"/>
11.15 VRSE Clean Water and Coffee Station				
VRSE Barista Bar	M	M	<input type="checkbox"/>	<input type="checkbox"/>
Coffee serving	M	M	<input type="checkbox"/>	<input type="checkbox"/>
Water serving	M	M	<input type="checkbox"/>	<input type="checkbox"/>
Space for buffet	R	R	<input type="checkbox"/>	<input type="checkbox"/>
Space for bar seating	R	R	<input type="checkbox"/>	<input type="checkbox"/>
Space for browsing Your Car Studio items	R	R	<input type="checkbox"/>	<input type="checkbox"/>
11.16 VRSE Your Car Studio				
Color & Trim Display	M	M	<input type="checkbox"/>	<input type="checkbox"/>
Explorer Screen with car configurator	M	M	<input type="checkbox"/>	<input type="checkbox"/>

Note: All variations need to be approved by VCC.

VRSE

11.25.

VRSE EVALUATION FORM

Key to requirement:

M Mandatory

N Not required

O Optional

R Recommended

* Only applies to new materials and products

To comply with VRSE, fulfill all Mandatory and at least half of Recommended points.

Please note that this is a complementary evaluation form. To comply with standard retail requirements, please fulfill the evaluation form of chapter 9.

** Please tick as appropriate

Areas	VRSE (Green field)	VRSE (Brown field)	Compliant? **	
			Yes	No
11.16 VRSE Your Car Studio				
Drawer system for trims and detail samples	M	M	<input type="checkbox"/>	<input type="checkbox"/>
A place for working with the samples	M	M	<input type="checkbox"/>	<input type="checkbox"/>
11.17 VRSE Accessories Hub				
Fully accessorized car	M	M	<input type="checkbox"/>	<input type="checkbox"/>
Freestanding Display Stands	M	M*	<input type="checkbox"/>	<input type="checkbox"/>
Physical Wheel Stands	M	M	<input type="checkbox"/>	<input type="checkbox"/>
Physical Child Safety Display	M	M	<input type="checkbox"/>	<input type="checkbox"/>
Physical Cargo Display	R	R	<input type="checkbox"/>	<input type="checkbox"/>
Winter Wheel Stand or Wheel Stand	R	R	<input type="checkbox"/>	<input type="checkbox"/>
11.18 VRSE Lifestyle Shop				
Units showing Lifestyle Items	M	M	<input type="checkbox"/>	<input type="checkbox"/>
Display Units	R	R	<input type="checkbox"/>	<input type="checkbox"/>
Shelving Unit	R	R	<input type="checkbox"/>	<input type="checkbox"/>
Clothing Rack	R	R	<input type="checkbox"/>	<input type="checkbox"/>
Mirror	R	R	<input type="checkbox"/>	<input type="checkbox"/>
Pricing System	R	R	<input type="checkbox"/>	<input type="checkbox"/>

Note: All variations need to be approved by VCC.

VRSE

11.25.

VRSE EVALUATION FORM

Key to requirement:

M Mandatory

N Not required

O Optional

R Recommended

* Only applies to new materials and products

To comply with VRSE, fulfill all Mandatory and at least half of Recommended points.

Please note that this is a complementary evaluation form. To comply with standard retail requirements, please fulfill the evaluation form of chapter 9.

** Please tick as appropriate

Areas	VRSE (Green field)	VRSE (Brown field)	Compliant? **	
			Yes	No
11.19 VRSE Backdrop				
Iron mark on opal glass	M	M	<input type="checkbox"/>	<input type="checkbox"/>
A large scale image printed on canvas backlit by LED	M	M*	<input type="checkbox"/>	<input type="checkbox"/>
Light metal structure for framing, in black	M	R	<input type="checkbox"/>	<input type="checkbox"/>
Functional storage	R	R	<input type="checkbox"/>	<input type="checkbox"/>
11.20 VRSE Kid's Lounge				
Comfortable and playful seating	M	M	<input type="checkbox"/>	<input type="checkbox"/>
Generous Carpets	M	M	<input type="checkbox"/>	<input type="checkbox"/>
Low free standing shelf	R	R	<input type="checkbox"/>	<input type="checkbox"/>
Digital games consoles and screen	R	R	<input type="checkbox"/>	<input type="checkbox"/>
Analogue games	R	R	<input type="checkbox"/>	<input type="checkbox"/>
Books, paper and toxic-free crayons	R	R	<input type="checkbox"/>	<input type="checkbox"/>
Animal toys from nordic fauna	R	R	<input type="checkbox"/>	<input type="checkbox"/>
11.21 VRSE Sculpture				
Sustainability sculpture in white stained plywood with pendant lighting	R	R	<input type="checkbox"/>	<input type="checkbox"/>
11.23 VRSE Furniture				
Using only VRSE certified furniture	M	M*	<input type="checkbox"/>	<input type="checkbox"/>

Note: All variations need to be approved by VCC.